



FREIGHT CLUSTER PLAN

IN COOPERATION WITH **ARC**

**STEERING COMMITTEE MEETING
JANUARY 24, 2024**

PRESENTED BY



METRO ANALYTICS

IN ASSOCIATION WITH



Agenda:

- **Introduction and Purpose of Study**

- **Project Schedule**

- **Outreach Activities**

- **Inventory and Assessment**

- **Traffic Study: Preliminary Findings**

- **Universe of Projects**

- **Next Steps:**



Collaborative Team Roles:



METRO ANALYTICS

- **Prime Firm: Project Identification and Prioritization, Freight and Economic Analysis**



- **Traffic Study, Work Program Development, Roadway Design, GDOT Coordination**



- **Stakeholder Involvement, Outreach Support, Social Media**



KB | ADVISORY GROUP

- **Market and Real Estate Assessment, Industrial Development Best Practices**



Purpose:

- **Understand existing freight assets and surrounding issues**
- **Guide future development of freight assets to create sustainable industrial development**
- **Coordination of ongoing and future projects**
- **Provide a cost-effective opportunistic work program**

Key focus areas:



Promote a safe, balanced transportation environment for freight and multimodal travel



Promote economic development



Identify appropriate industrial land uses



Promote efficient transportation solutions



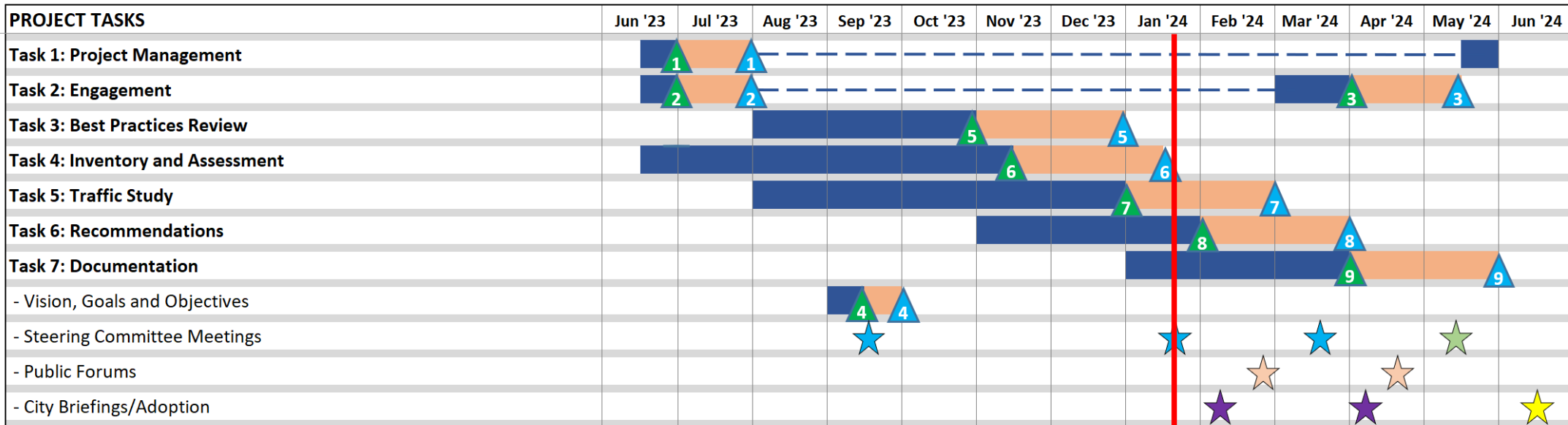
Protect nearby communities



Engaging the private sector and community stakeholders



Project Schedule:



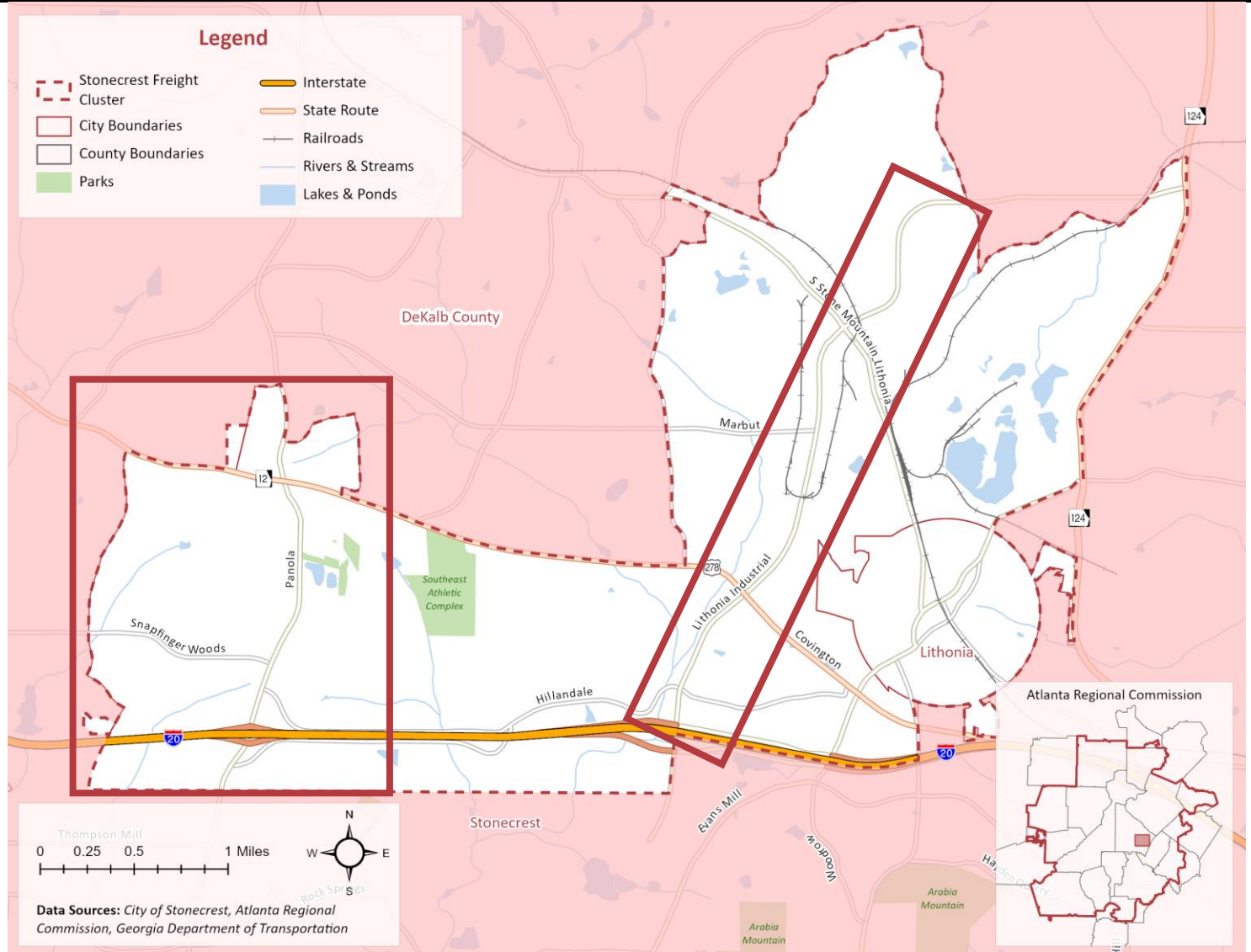
- Steering Committee Meetings
- Optional Steering Committee Meeting (If Needed)
- Public Forums
- City Briefings
- Adoption by City
- Project Management Plan
- Stakeholder Engagement and Outreach Plan
- Summary of Public Involvement Activities
- Vision, Goals and Objectives
- Best Practices Report
- Inventory and Assessment Report
- Traffic Study Report
- Recommended Work Program/Policy Recommendations
- Recommendations Final Report and Executive Summary
- Denotes Internal Review Period

**STEERING COMMITTEE MEETING
JANUARY 24, 2024**



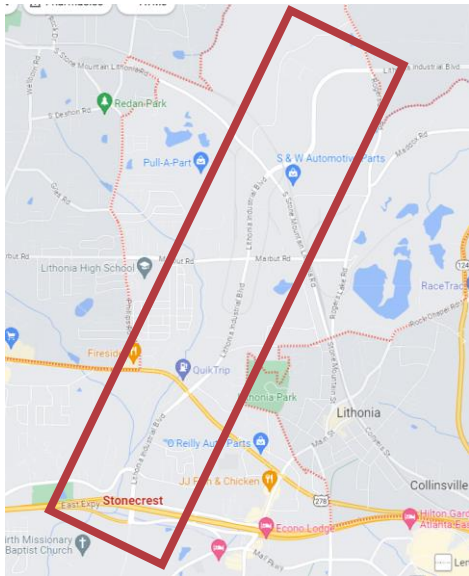
Overview of the Study Area

- Study area consists of the northern Stonecrest primarily north of I-20
- Two major industrial areas
 - Lithonia Industrial Boulevard
 - Panola Road and Snapfinger Woods Drive
- City of Lithonia
 - Commercial areas near Max Cleland Boulevard and Swift Street
- Arabian Mountain National Heritage Area south of the study area



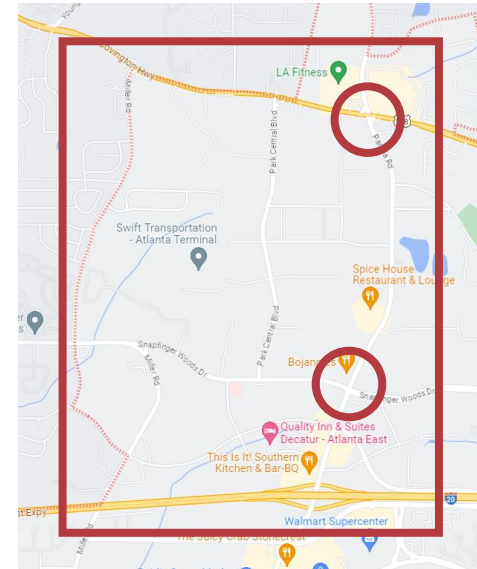
Prevailing Issues:

- **Two Primary Industrial Areas (Lithonia Industrial District, Park Central/Panola Road Corridor)**



- **Lithonia Industrial District**

- **Aging Development**
- **Arabia Mountain National Heritage Area**
- **Insufficient Roadways for Freight**



- **Park Central/Panola Road Corridor**

- **Access Issues at US 278/Covington Highway and Snapfinger Woods Drive**

- **Recent Influx of Gravel Truck Parking Lots**
- **Requirements that restrict development of new gas stations**
- **Integrating NEVI Plan into the City's infrastructure (w presence of I-20)**



Outreach Activities:

- **Steering Committee (3-4 Meetings, In Progress)**
- **Stakeholder Interviews (Identify freight related challenges, facility operations, trends, potential projects)**
- **Surveys**
 - **Driver Intercept Survey (Completed)**
 - **Stakeholder/Community Survey (In Progress)**
 - **Follow-up Stakeholder Survey (Validate draft recommendations)**
- **Freight Forum – February 21**
- **Public Meeting – February 21**
- **Communication Tools**
 - **Project Landing Page**
 - **Social Media**



Truck Driver Survey

- **33 Total – Parking Lots, Fueling Locations, Staging Areas**
- **Predominantly Fleet/Company (19) and Long-Haul Drivers**
- **Biggest Challenges**
 - **Width of Roads in the Area and Tight Receiving Access**
 - **Moving Through Constructions Zones**
 - **Poor Signage Placement and Visibility**
 - **Traffic Congestions**
 - **Parking**



Truck Driver Survey

- **Biggest Safety Challenges**
 - **Construction Zones**
 - **Speeding Drivers**
- **Most Challenging Roadways and Intersections**
 - **I-75 Through the McDonough Area**
 - **I-285**
 - **Lithonia Industrial Blvd.**
- **Recommended Improvements**
 - **Truck Only Lanes**
 - **FREE Overnight Parking**
 - **Wider Lanes for Non-Interstate Driving**

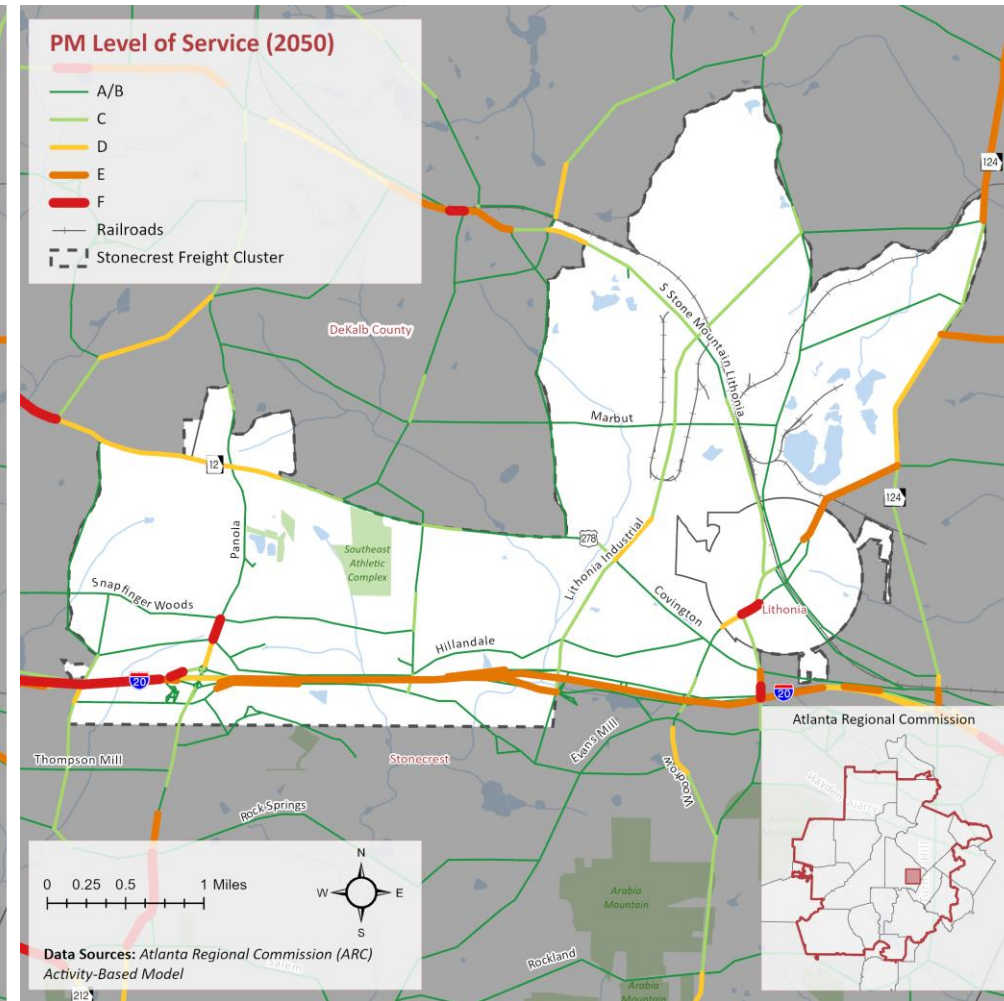
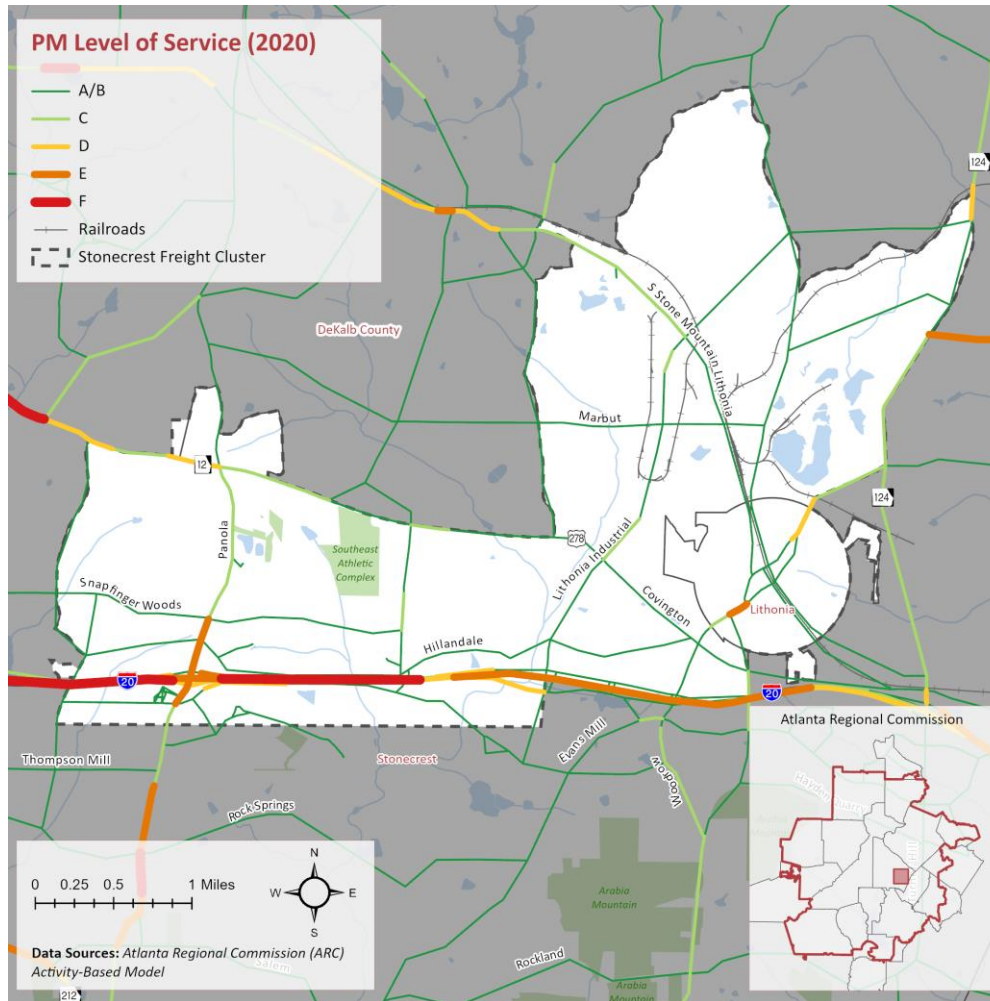


Roadway Characteristics: Congestion

Level of Service (LOS)

Major Corridors are projected to experience congestion and capacity limitations.

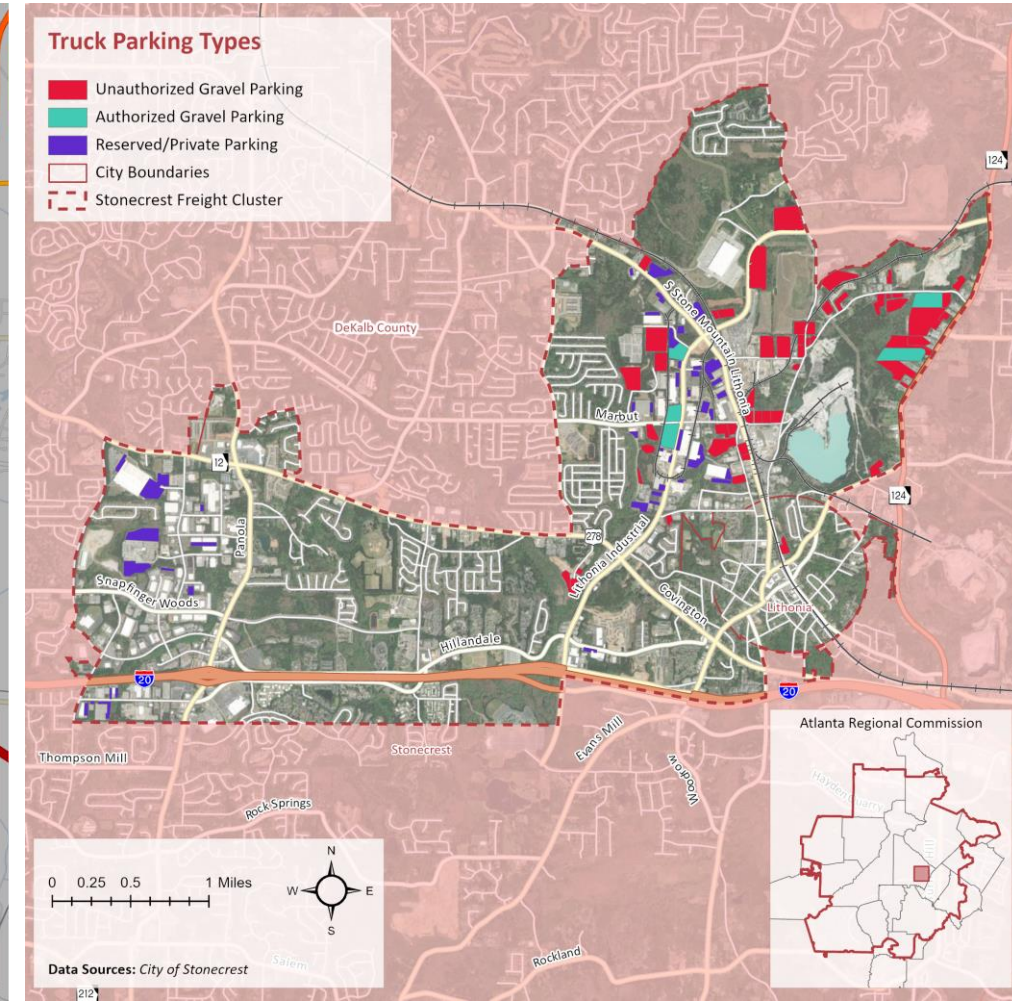
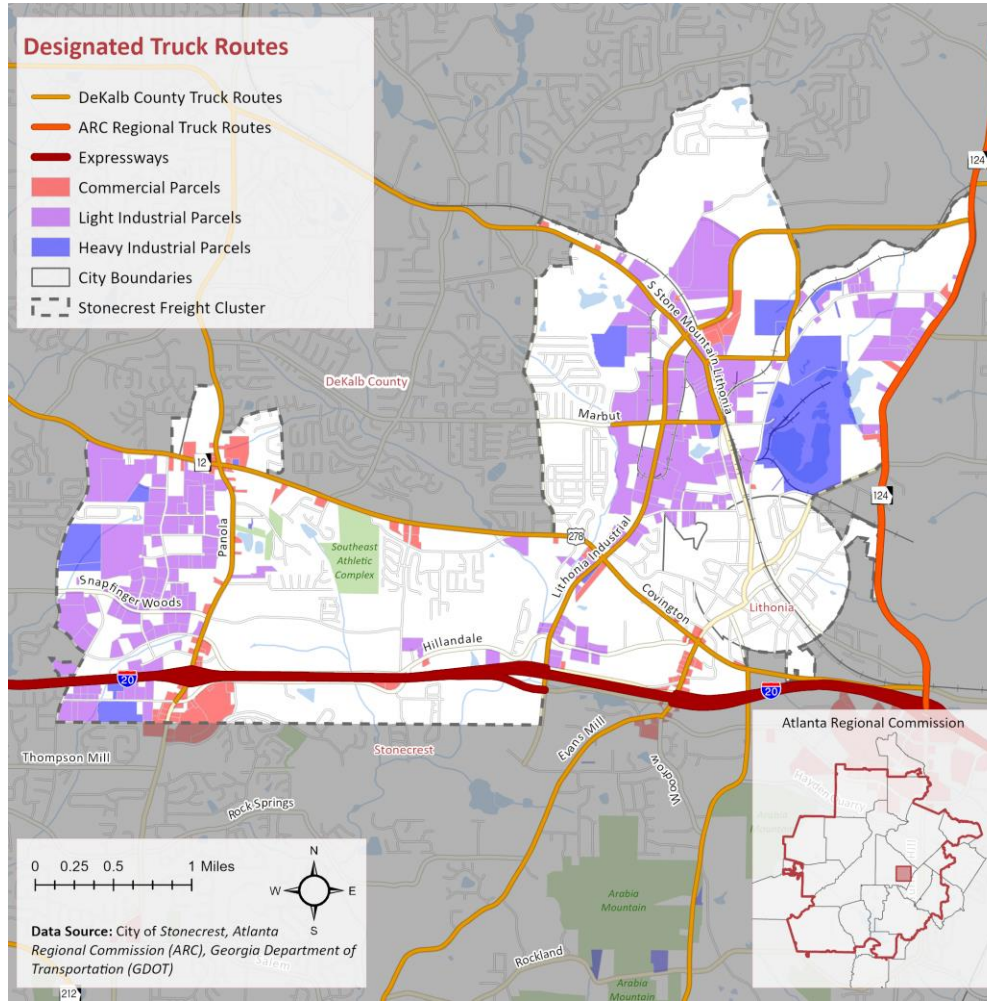
Congestion could hinder mobility and impact freight efficiency.



Roadway Characteristics: Truck Traffic

Truck Routes

Use of non-truck routes has resulted in safety, congestion, and pavement damage problems.

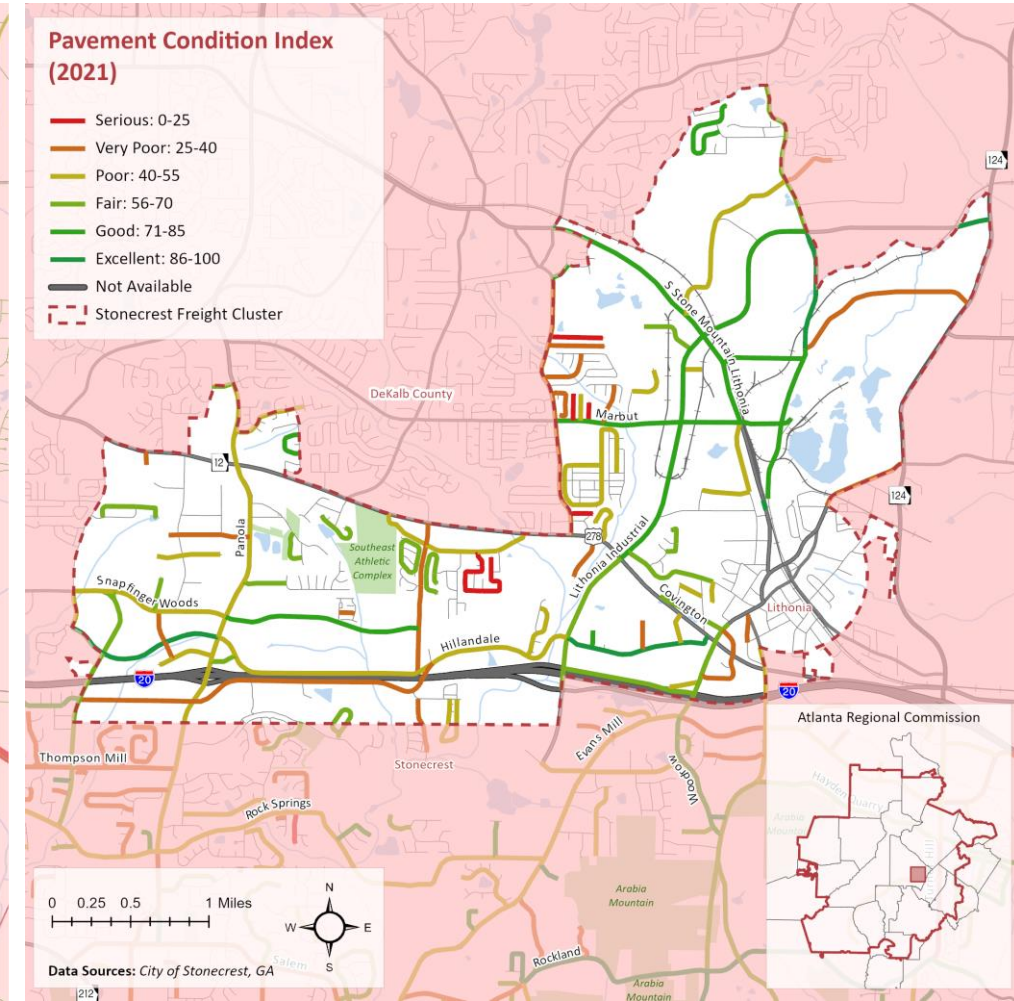
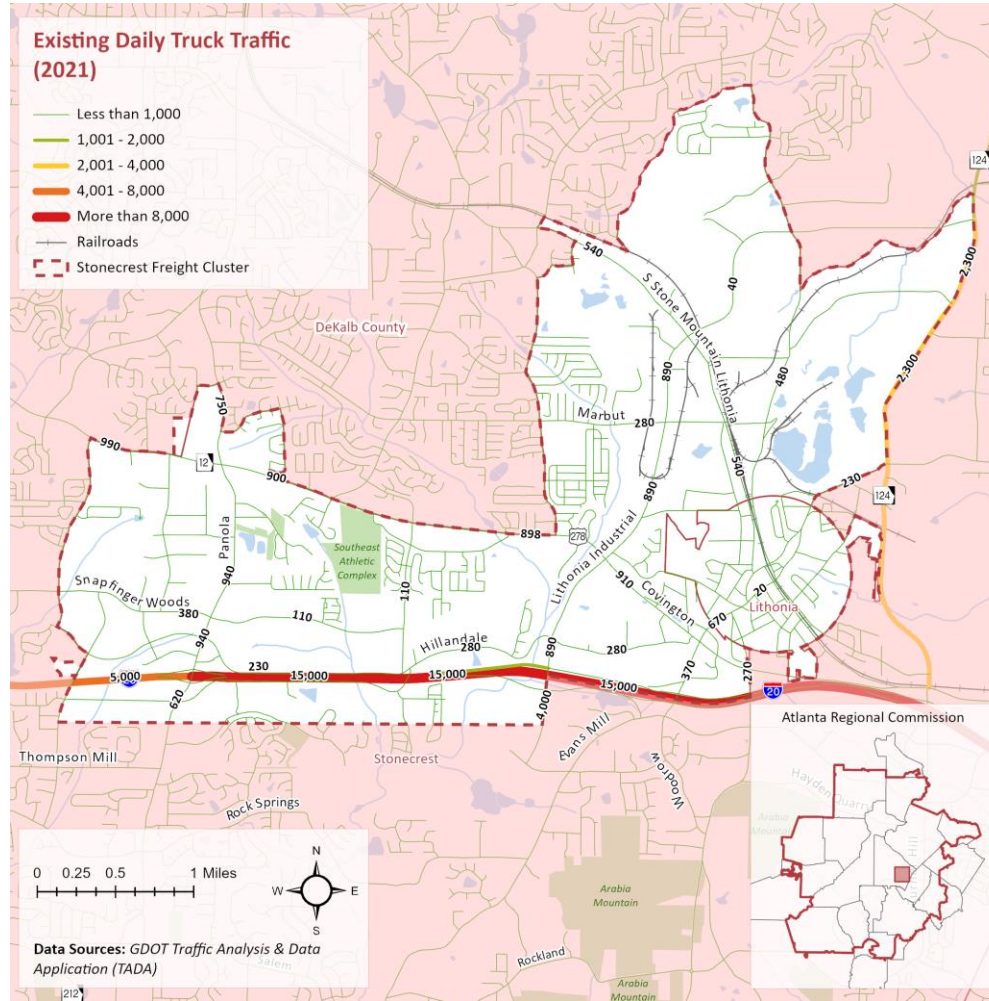


Roadway Characteristics: Freight Traffic

Truck Volumes and Pavement Conditions

Some of the major corridors have poor Pavement Conditions:

- Panola Road,
- Snapfinger Woods,
- DeKalb Medical Parkway,
- Hillendale Drive
- Maddox Road

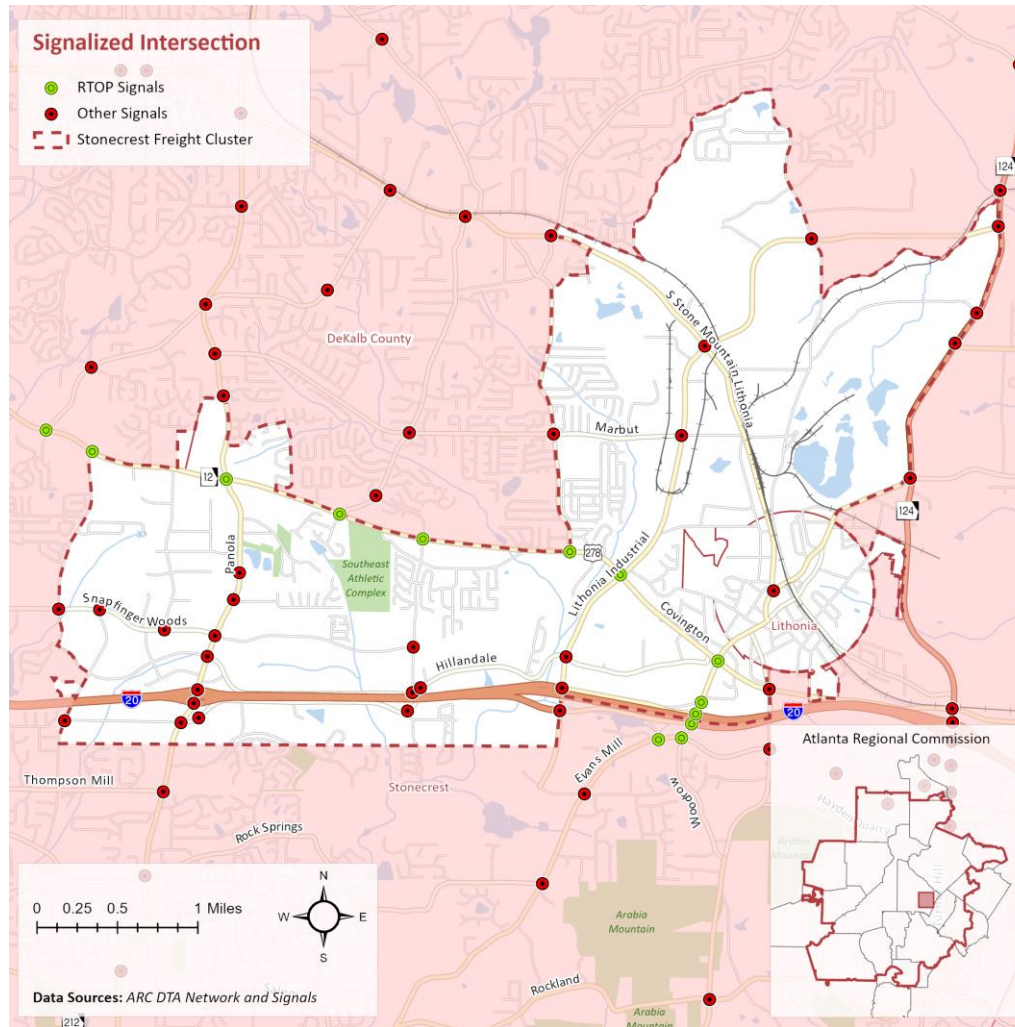


Roadway Characteristics

Signalized Intersection

Significant backup of vehicles at intersections along major routes

- High density of traffic signals along major truck corridors.
- Traffic backups/queues are longer in certain sections due to longer trucks.



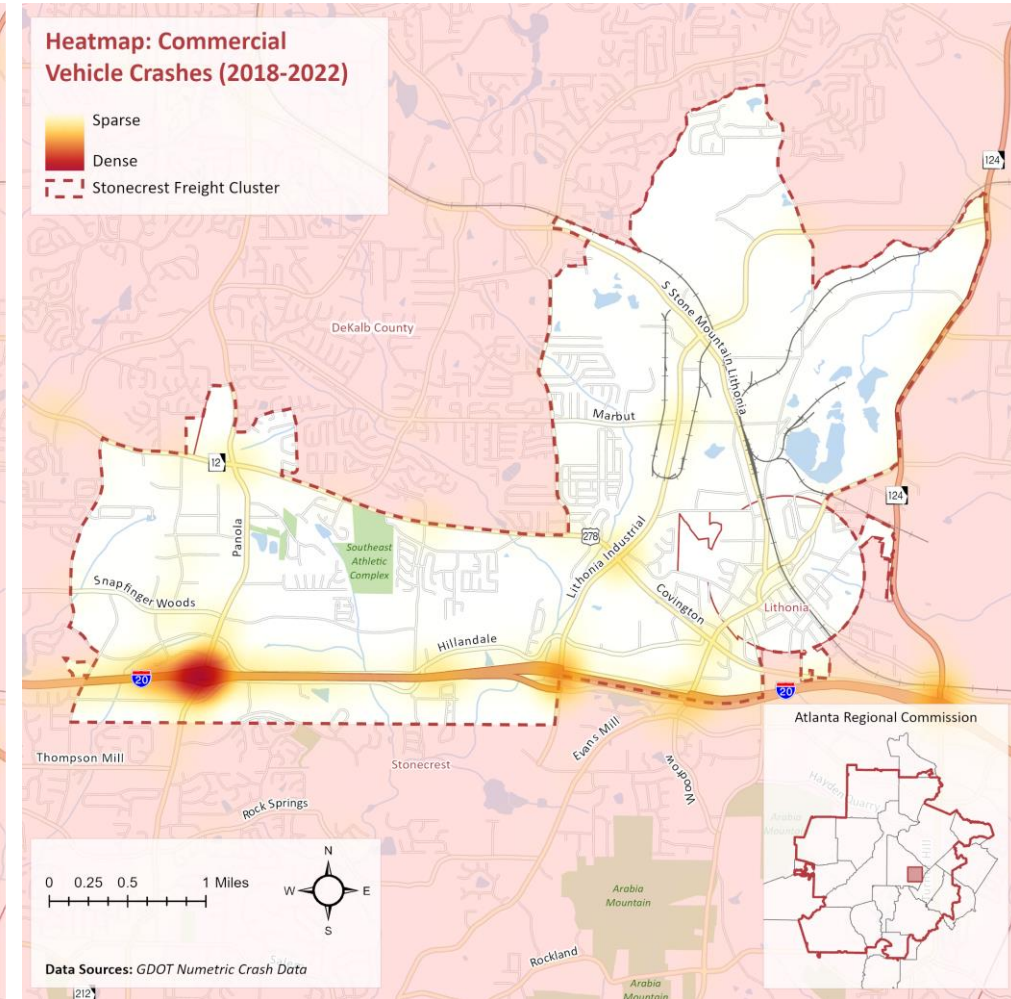
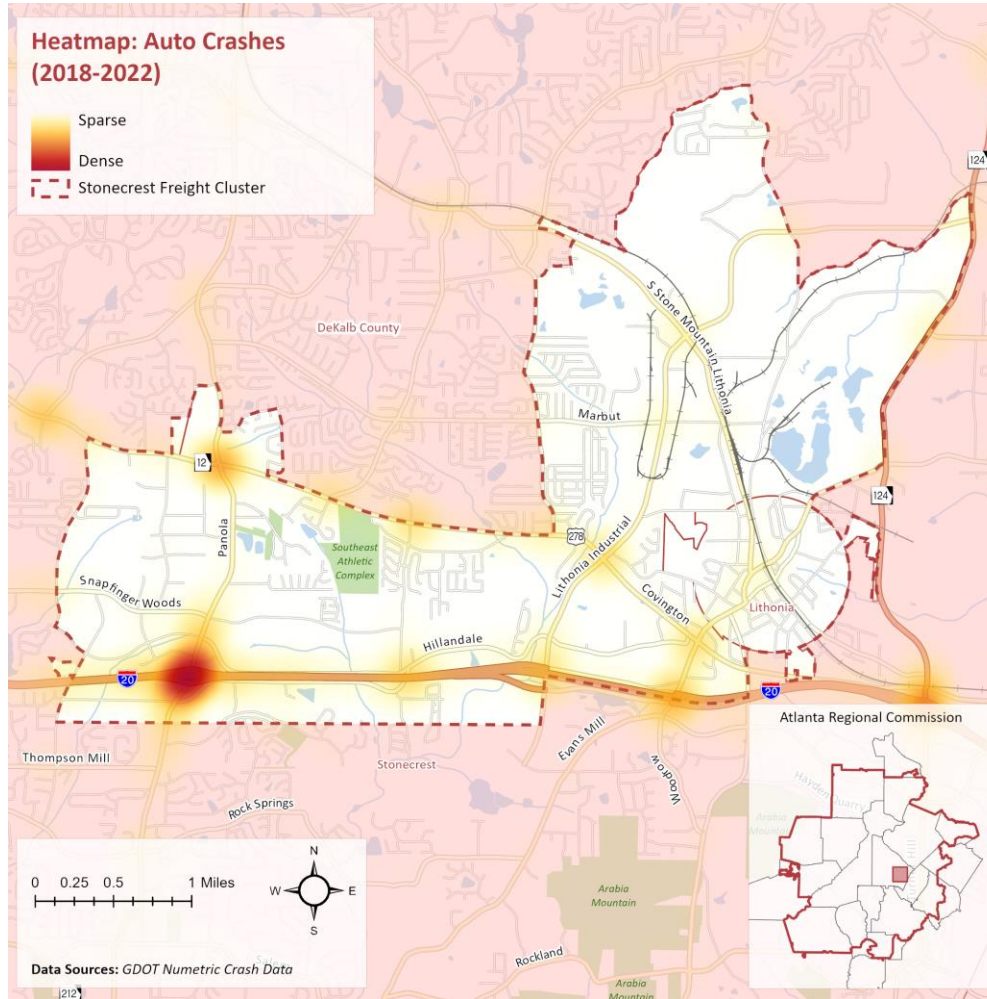
Safety Analysis

Auto & Commercial Vehicle Crashes

Highest Crashes: I-20 and Panola Road intersection.

Additional Hotspots:

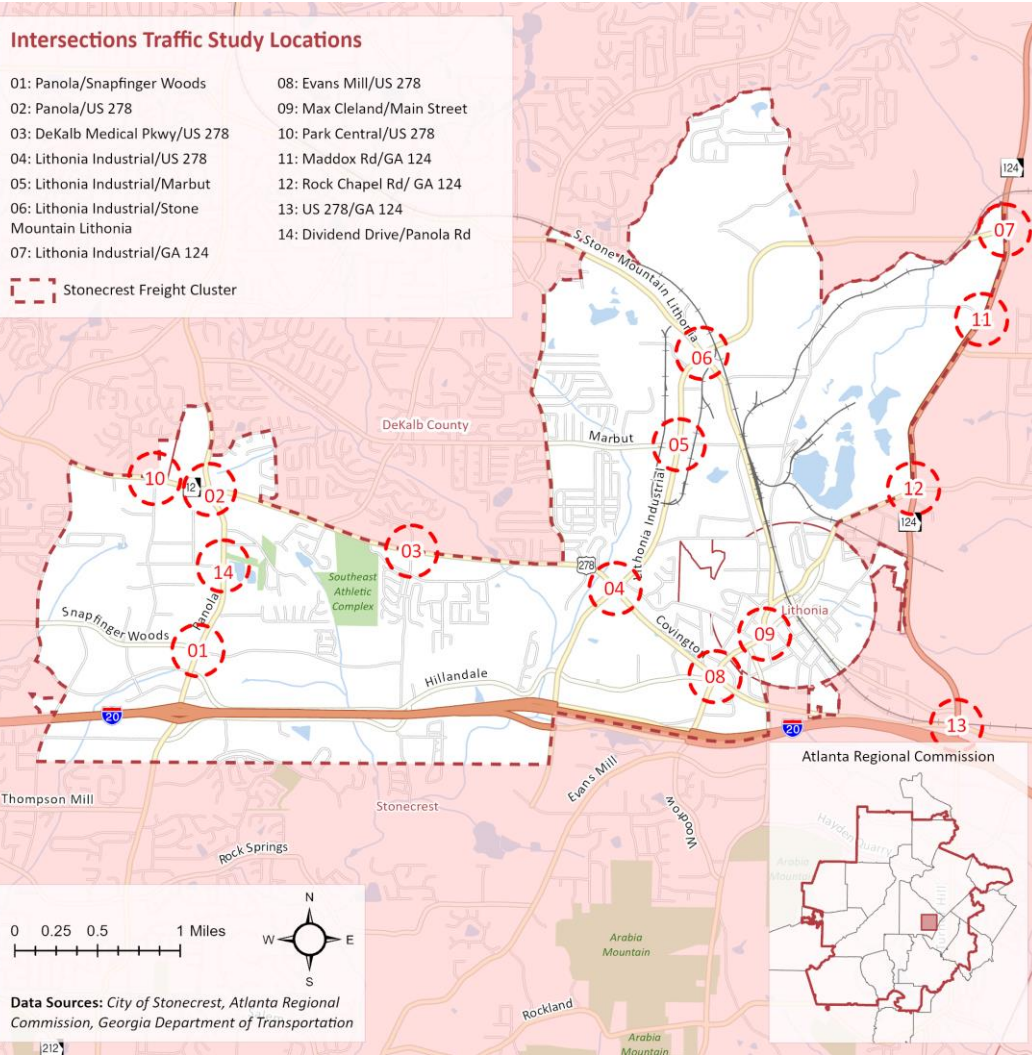
- Panola Road/US 278/Covington Highway
- I-20/Lithonia Industrial Boulevard
- Evans Mill Road



Intersections Traffic Study Locations

- 01: Panola/Snapfinger Woods
- 02: Panola/US 278
- 03: DeKalb Medical Pkwy/US 278
- 04: Lithonia Industrial/US 278
- 05: Lithonia Industrial/Marbut
- 06: Lithonia Industrial/Stone Mountain Lithonia
- 07: Lithonia Industrial/GA 124
- 08: Evans Mill/US 278
- 09: Max Cleland/Main Street
- 10: Park Central/US 278
- 11: Maddox Rd/GA 124
- 12: Rock Chapel Rd/ GA 124
- 13: US 278/GA 124
- 14: Dividend Drive/Panola Rd

Stonecrest Freight Cluster



Stonecrest Freight Cluster Traffic Study: Existing Intersection Analysis

	Roadway Striping	Freight Conductive Infrastructure	Roadway Condition	Sidewalk Condition	Pedestrian Safety Features	Existing Traffic Flow	Intersection Sight Distance	Intersection Development Potential	Existing Roadway Lighting	Existing Transit Facilities
1) Panola Rd at Snapfinger Woods Dr	Yellow	Green	Yellow	Yellow	Green	Yellow	Yellow	Green	Yellow	Yellow
2) US 278 at Panola Rd	Green	Green	Yellow	Yellow	Yellow	Yellow	Green	Green	Yellow	Yellow
3) US 278 at DeKalb Medical Pkwy	Yellow	Green	Yellow	Yellow	Yellow	Yellow	Green	Green	Yellow	Yellow
4) US 278 at Lithonia Industrial Blvd	Yellow	Green	Yellow	Yellow	Yellow	Yellow	Green	Green	Yellow	Yellow
5) Lithonia Industrial Blvd at Marbut Rd	Yellow	Green	Yellow	Yellow	Yellow	Yellow	Green	Green	Yellow	Yellow
6) Lithonia Industrial Blvd at Stone Mountain Lithonia Rd	Yellow	Green	Yellow	Yellow	Yellow	Yellow	Green	Green	Yellow	Yellow
7) Lithonia Industrial Blvd at SR 124	Green	Green	Yellow	Yellow	Yellow	Yellow	Green	Green	Yellow	Yellow
8) US 278 at Evans Mill Rd	Yellow	Green	Yellow	Yellow	Yellow	Yellow	Green	Green	Yellow	Yellow
9) Max Cleland Blvd at Main St	Yellow	Green	Yellow	Yellow	Yellow	Yellow	Green	Green	Yellow	Yellow
10) US 278 at Park Central Blvd	Green	Green	Yellow	Yellow	Yellow	Yellow	Green	Green	Yellow	Yellow
11) SR 124 at Maddox Rd	Green	Green	Yellow	Yellow	Yellow	Yellow	Green	Green	Yellow	Yellow
12) SR 124 at Rock Chapel Rd	Yellow	Green	Yellow	Yellow	Yellow	Yellow	Green	Green	Yellow	Yellow
13) US 278 at SR 124	Yellow	Green	Yellow	Yellow	Yellow	Yellow	Green	Green	Yellow	Yellow
14) Panola Rd at Dividend Dr	Yellow	Green	Yellow	Yellow	Yellow	Yellow	Green	Green	Yellow	Yellow
Key	Good Condition (Green)			Fair Condition (Yellow)			Needs Improvement (Red)			



Safety Analysis

Auto & Commercial Vehicle Crashes

- Safety issues impose societal costs as well as resulting in traffic disruption and significant economic costs.
- Lack of safe crossing and lighting poses a substantial risk to pedestrians and cyclists.
- Need for safety measures to address specific issues like tailgating and lane changing.

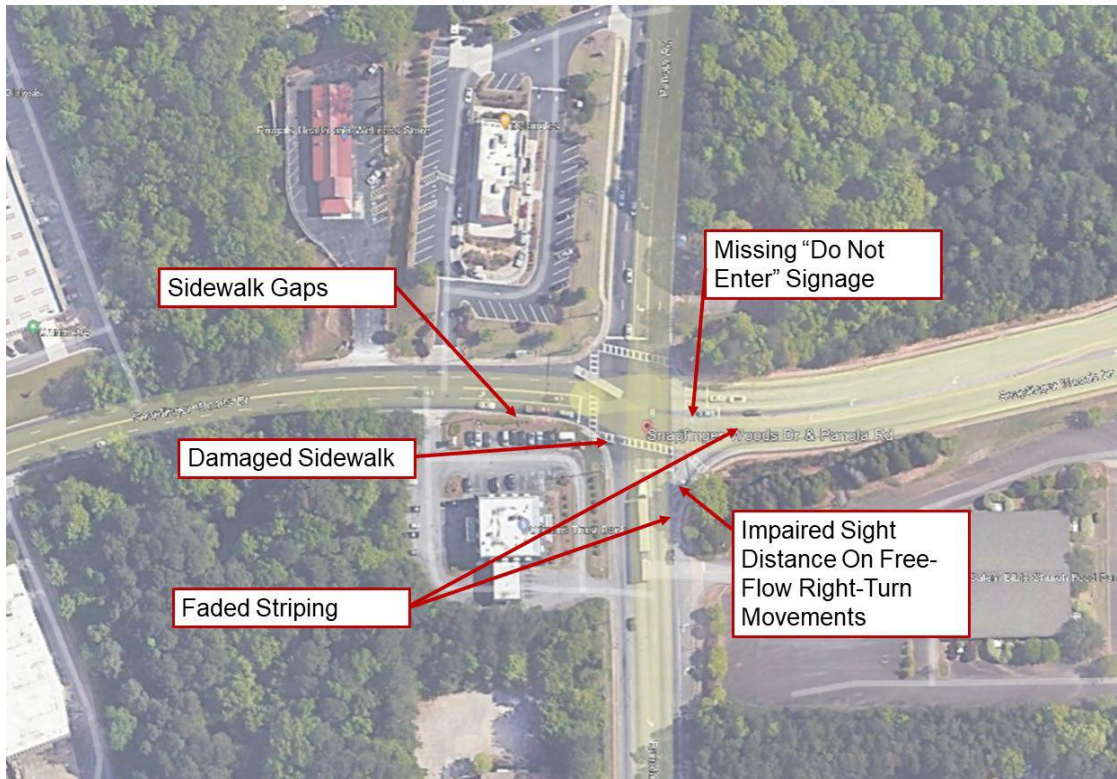
No	Intersection	Average Crashes per Year	% Injury Crashes	# of Fatal Crashes	Frequent Crash Type
1	Panola Rd at Snapfinger Woods Dr	44	0.34	0	49% Rear End 36% Angle
2	US 278 at Panola Rd	141	0.33	2	45% Angle 33% Rear End
3	US 278 at DeKalb Medical Pkwy	65	0.31	1	43% Angle 34% Rear End
4	US 278 at Lithonia Industrial Blvd	86	0.35	0	42% Rear End 35% Angle
5	Lithonia Industrial Blvd at Marbut Rd	26	0.35	0	42% Angle 39% Rear End
6	Lithonia Industrial Blvd at Stone Mountain Lithonia Rd	37	0.33	2	48% Angle 34% Rear End
7	Lithonia Industrial Blvd at SR 124	24	0.28	1	47% Rear End 21% Not a Collision with a Motor Vehicle
8	US 278 at Evans Mill Rd	70	0.25	0	42% Rear End 34% Angle
9	Max Cleland Boulevard at Main St	13	0.24	0	51% Rear End 28% Angle
10	US 278 at Park Central Blvd	15	0.38	0	68% Rear End 42% Angle
11	SR 124 at Maddox Rd	13	0.35	0	56% Rear End 23% Angle
12	SR 124 at Rock Chapel Rd	21	0.19	0	47% Rear End 35% Angle
13	US 278 at SR 124	57	0.2	0	42% Rear End 31% Angle
14	Panola Rd at Dividend Dr	8	0.29	0	42% Rear End 28% Angle



Traffic Study:

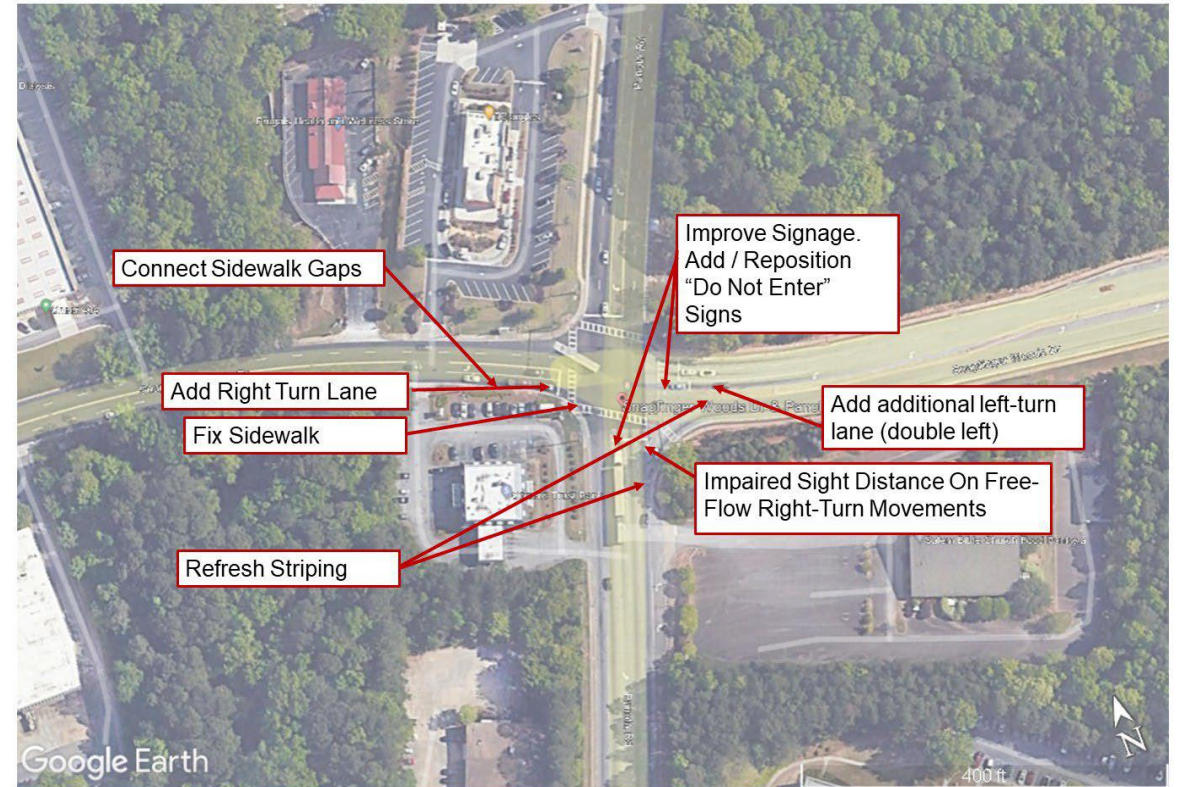
Field Observations

1. Panola Rd at Snapfinger Woods Dr



Proposed Improvements

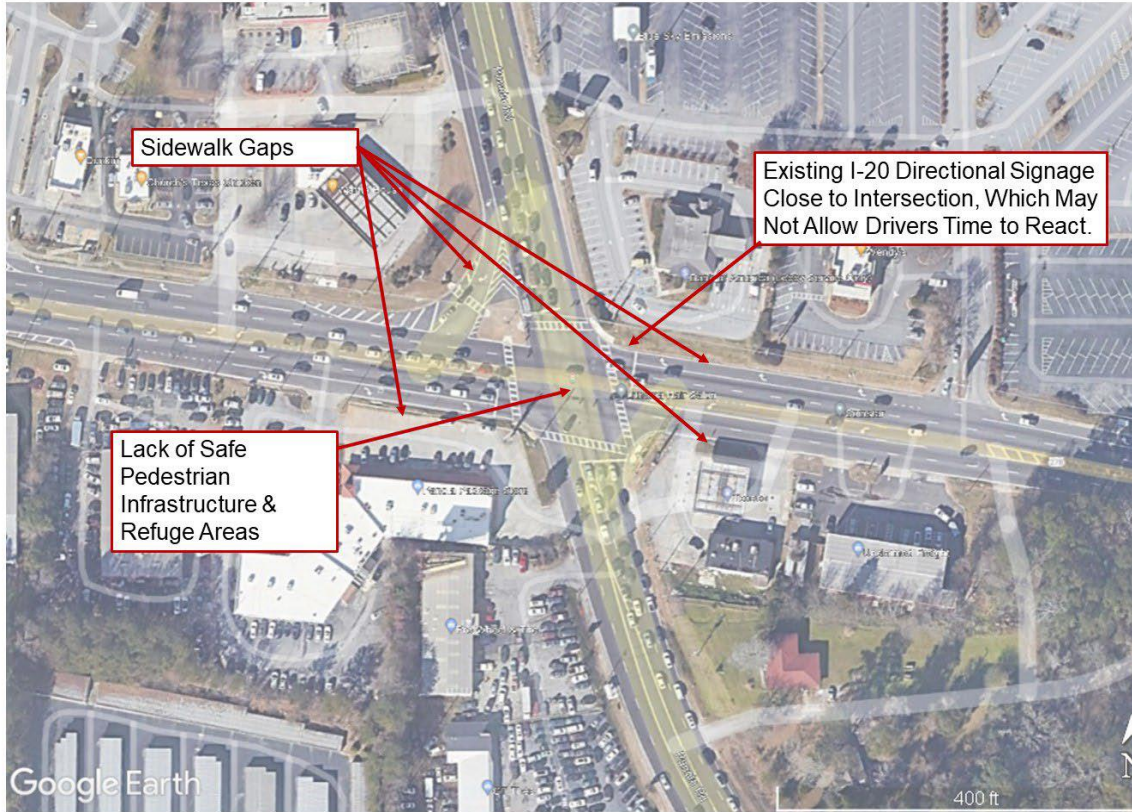
1. Panola Rd at Snapfinger Woods Dr



Traffic Study

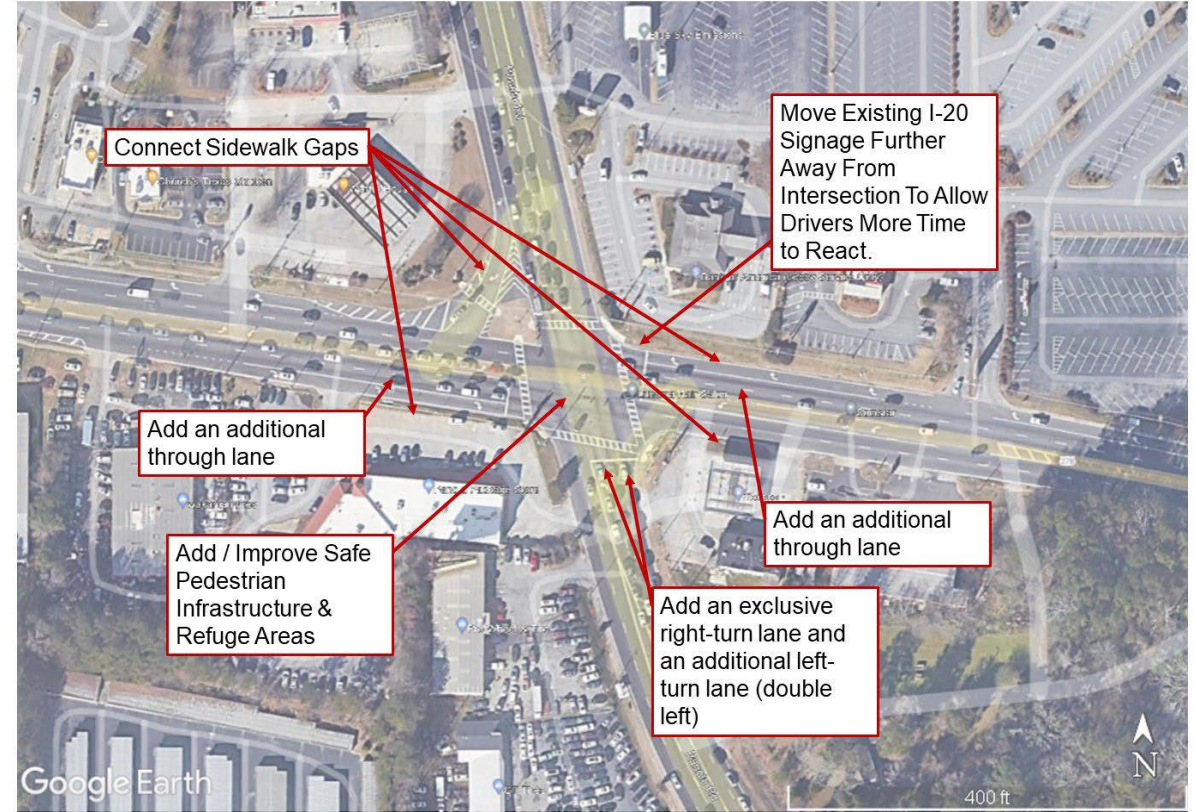
Field Observations

2. US 278 at Panola Rd



Proposed Improvements

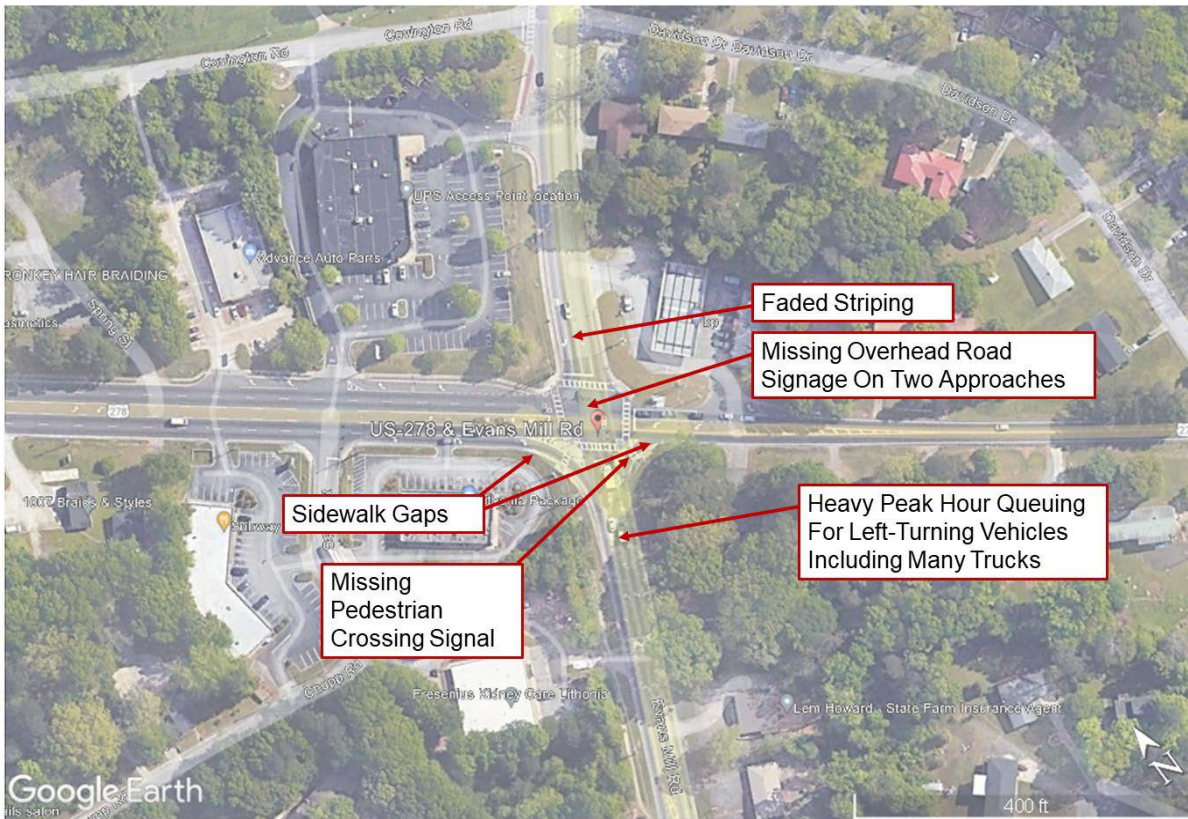
2. US 278 at Panola Rd



Traffic Study

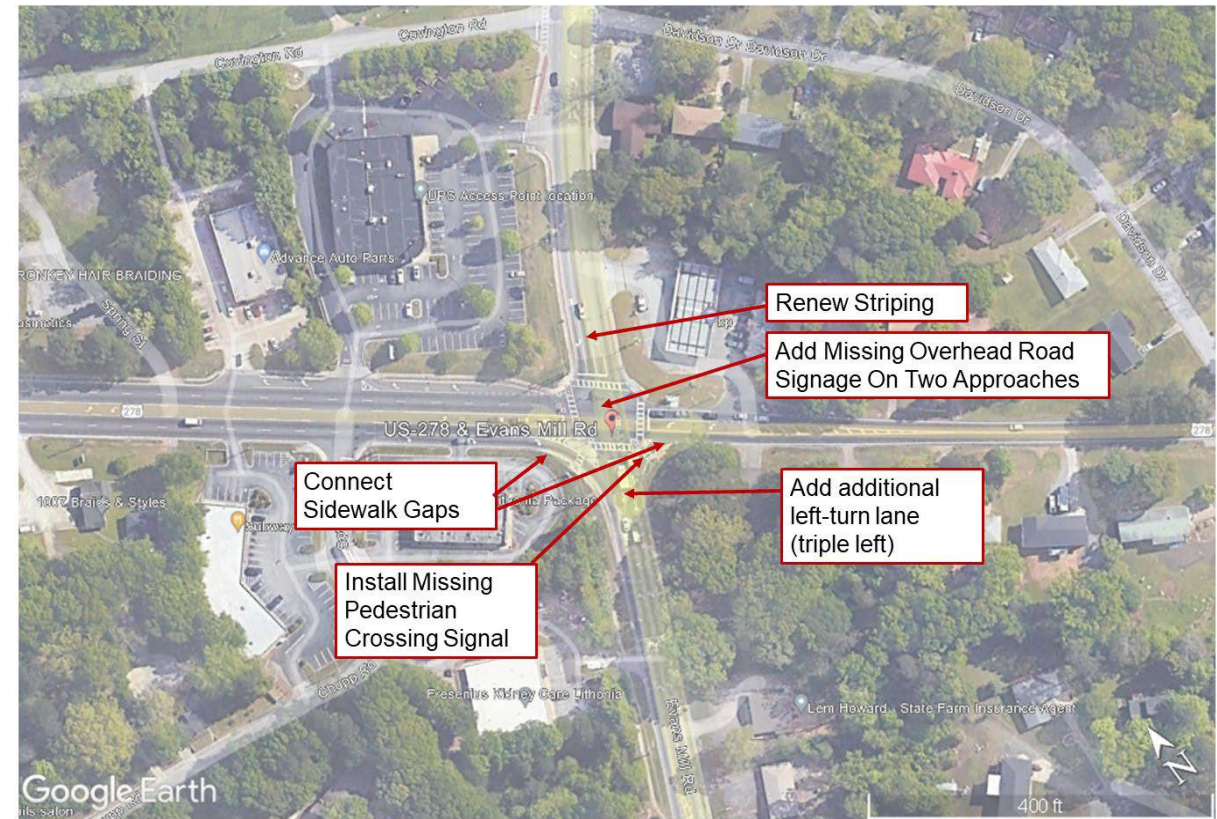
Field Observations

8. US 278 at Evans Mill Rd



Proposed Improvements

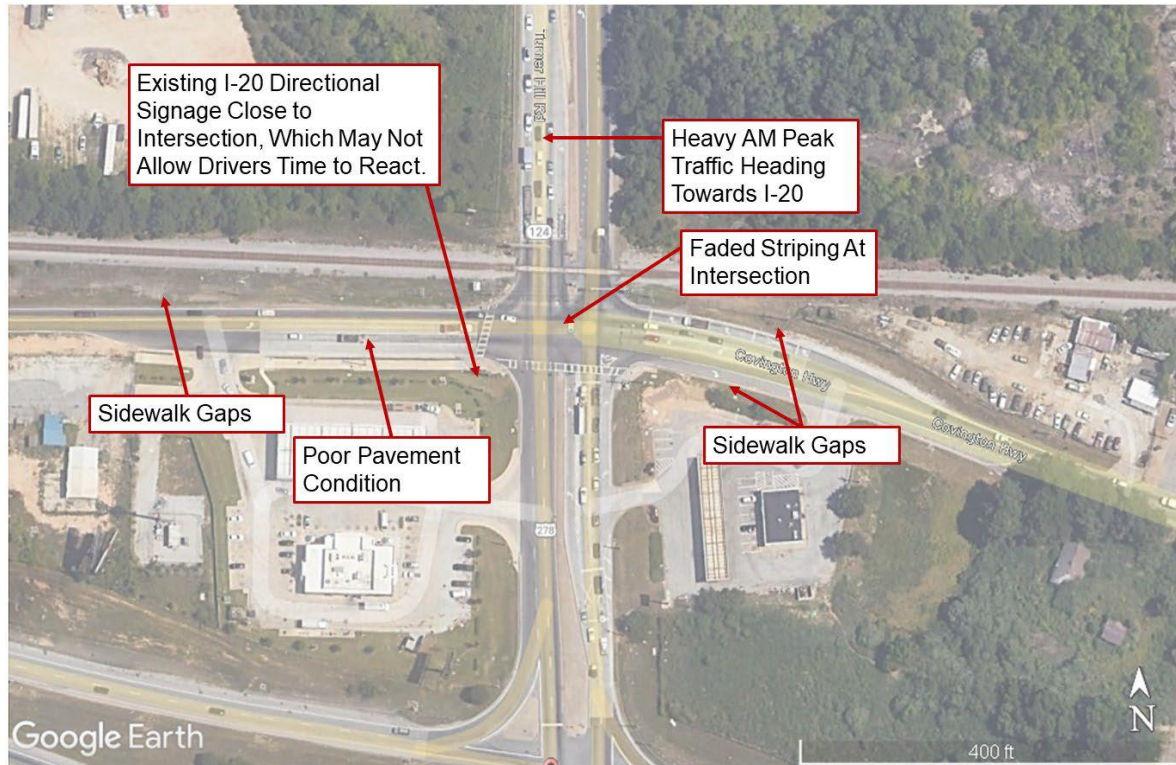
8. US 278 at Evans Mill Rd



Traffic Study

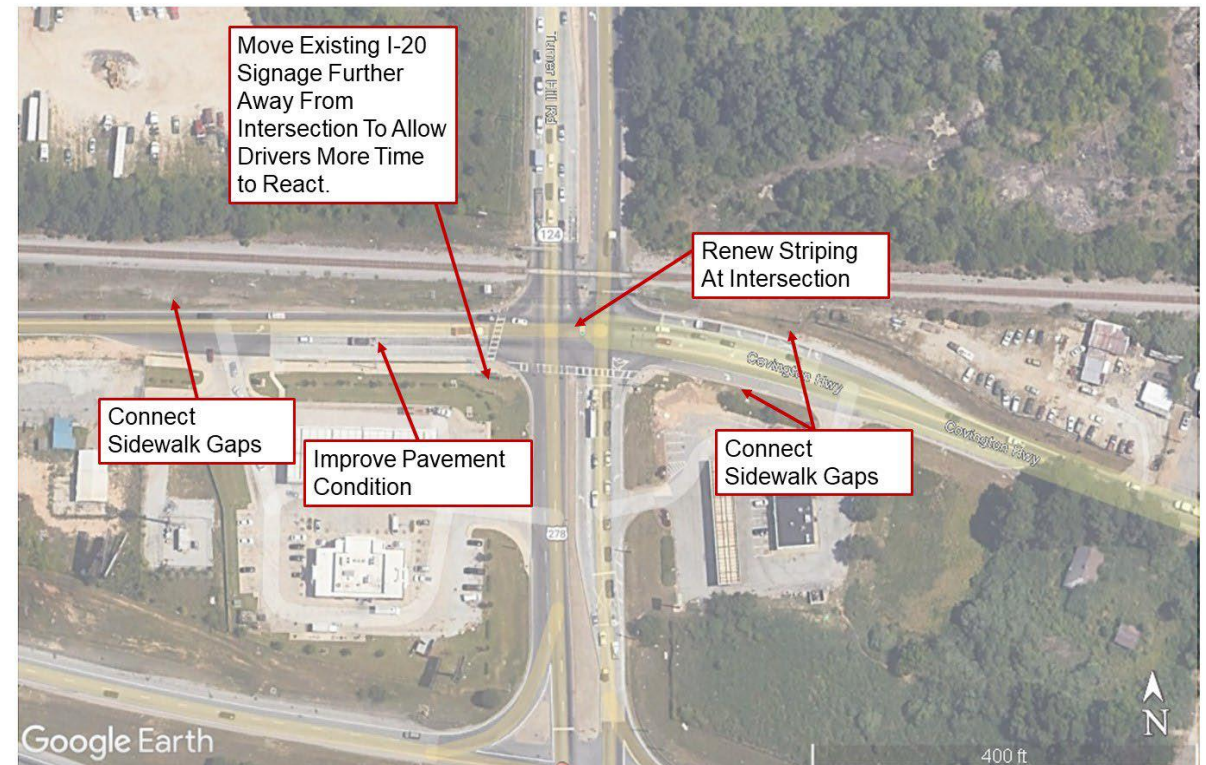
Field Observations

13. US 278 at SR 124

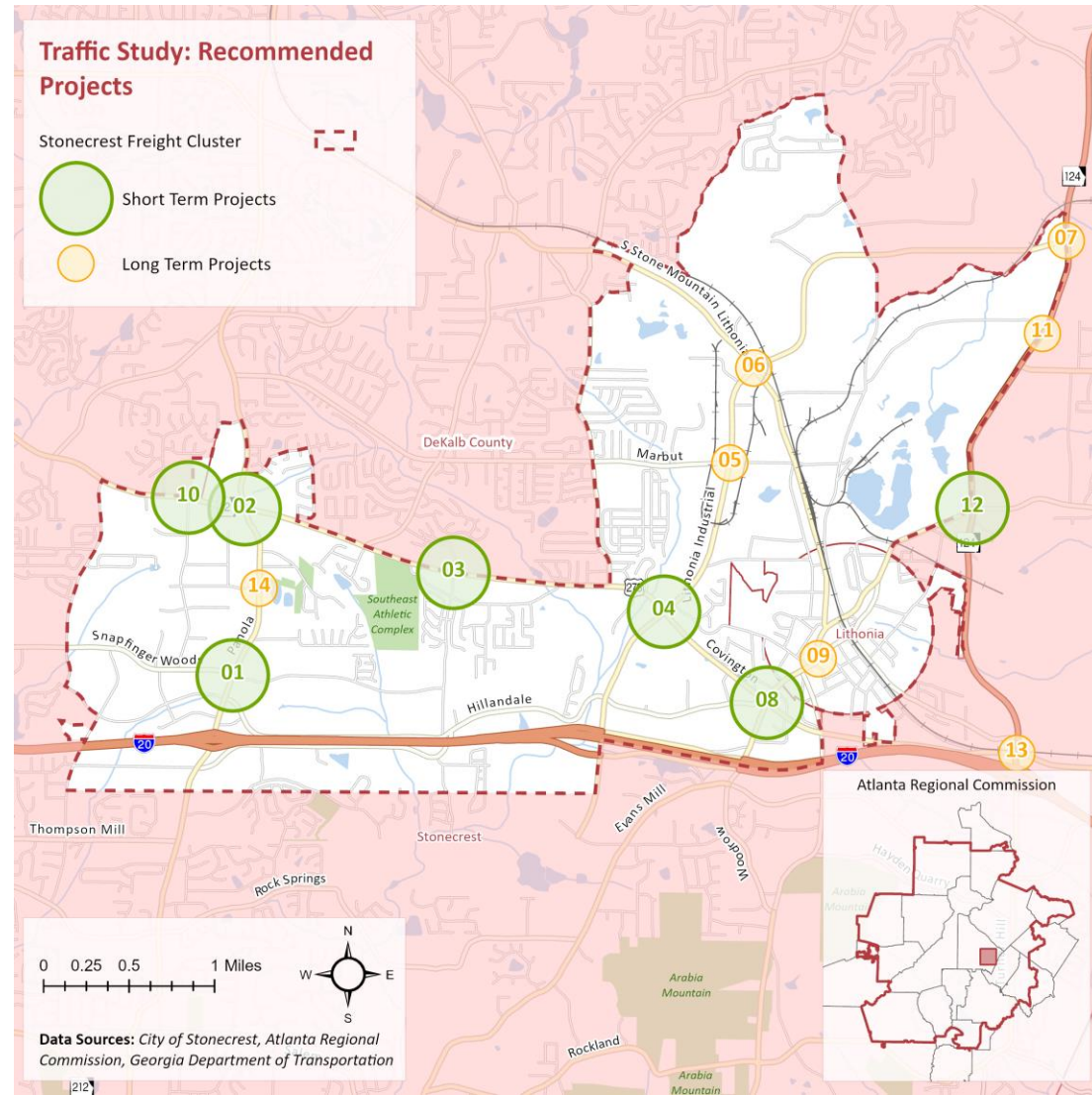


Proposed Improvements

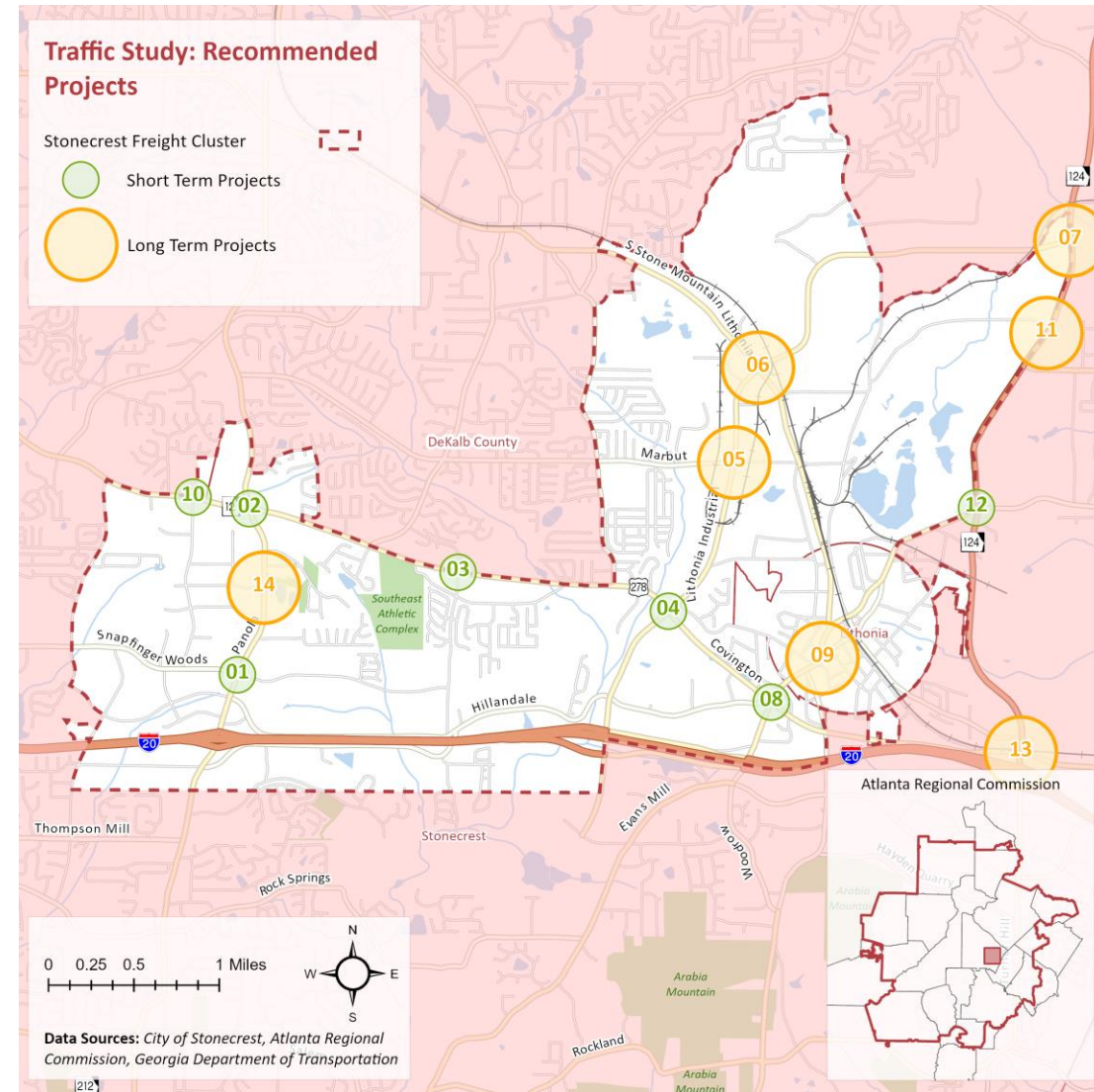
13. US 278 at SR 124



ID	Project Location	Priority	Recommended Improvements
01	Panola Rd at Snapfinger Woods Dr	Short Term	The project aims to improve the intersection by adding a dual left-turn lane and a separate right-turn lane for acceptable traffic flow. These enhancements align with GDOT Project #6890 and include additional improvements like sidewalk connectivity, improved signage, sidewalk repairs, refreshed striping, and addressing sight distance issues on free-flow right-turn movements.
02	US 278 at Panola Rd	Short Term	The project proposes double left-turn lanes and widening US 278/Covington Highway to ensure an acceptable Level of Service. Aligned with GDOT Project #6890, improvements include connecting sidewalks, adding lanes, relocating signage, enhancing pedestrian infrastructure, and introducing exclusive turn lanes.
03	US 278 at Dekalb Medical Parkway	Short Term	This project addresses failing service levels for specific movements by implementing a westbound double-left. Proposed improvements include renewing striping, connecting sidewalk gaps, and adding an additional left-turn lane (double left).
04	US 278 at Lithonia Industrial Boulevard	Short Term	The proposed project improves left-turn movements with an added lane, achieving LOS D during peak hours. Proposed enhancements include addressing a potential redevelopment site, refreshing striping, adding an exclusive right-turn lane, and improving tight turn radius.
08	US 278 at Evans Mill Road	Short Term	A proposed triple-left turn improves overall level of service. Other enhancements include renewing striping, adding missing overhead road signage, connecting sidewalk gaps, and installing a pedestrian crossing signal.
10	US 278 at Park Central Boulevard	Short Term	Planned improvements include adding a crosswalk and westbound sidewalk to the MARTA Stop, implementing safe crosswalks, and renewing striping.
12	SR 124 at Union Grove Road	Short Term	Proposed improvements include adding the double left-turn lane, incorporating a missing crosswalk, adding street name signage, and installing missing sidewalks on Rock Chapel Rd.



ID	Project Location	Priority	Recommended Improvements
05	Lithonia Industrial Boulevard at Marbut Road	Long Term	Suggested enhancements include improving tight turn radius, adding wayfinding signage to Interstate 20, fixing broken curb, and renewing striping.
06	Lithonia Industrial Boulevard at Stone Mountain Lithonia Road	Long Term	Suggested enhancements, include adding wayfinding directional signage to Interstate 20 and renewing intersection striping.
07	SR 124 at Lithonia Industrial Boulevard	Long Term	Suggested enhancements, include installing a missing pedestrian crossing pole, fixing a worn median, adding wayfinding directional signage to Interstate 20, and potentially adding overhead lighting on roadway approaches.
09	Main Street at Max Cleland Boulevard	Long Term	Suggested enhancements include improving pedestrian signage and renewing striping.
11	Rock Chapel Road at Maddox Road	Long Term	Suggested enhancements, include filling in and piping open drain channels, adding roadway lighting, fixing eroded curb and roadway, adding sidewalks on all approaches, and addressing a potential redevelopment site.
13	US 278 at SR 124	Long Term	Suggested enhancements, include moving existing I-20 signage further from the intersection for improved driver reaction time, renewing striping at the intersection, connecting sidewalk gaps to the west and east, and improving pavement condition.
14	Panola Road at Dividend Drive	Long term	Proposed enhancements include adding a stop bar, roadway striping to Dividend Drive east of the intersection, roadway lighting, vegetation trimming for improved sight distance, sidewalks on all approaches, additional roadway lighting to the south, and installing "Intersection Ahead" signage.



Source	Category	Type	Project Name
GDOT	Roadway and Bridges	Capacity	I-20 from I-285 East to Evans Mill Road Add 2 HOV Lanes
	Roadway and Bridges	Safety	SR 12/SR 124 @ CSX #279861D
	Roadway and Bridges	Safety	I-20 ATMS Comm/Surveillance from I-285/Dek to SR138/SR20/Rock
	Bicycle and Pedestrian	Sidewalks	SR 12/US 278 from CR 7938/Panola Road to CR 6305/Evans Mill Road
	Bicycle and Pedestrian	Bicycle/Pedestrian Facility	CR 7938/Panola Road from SR 12/Covington Highway to CR 5193/Redan Road
ARC Regional Transportation Plan	Roadway and Bridges	Capacity	Lithonia Industrial Boulevard Extension: Phase IV - New Alignment
	Roadway and Bridges	Capacity	I-20 East Collector/Distributor Lanes
	Roadway and Bridges	Capacity	Evans Mill Road Widening
Stonecrest Transportation Master Plan	Roadway and Bridges	Intersection Improvement	Turner Hill Road at I-20 East
	Roadway and Bridges	Intersection Improvement	Mall Parkway at Evans Mill Road
	Roadway and Bridges	Intersection Improvement	Traffic Signal Maintenance/ Upgrades
	Roadway and Bridges	Operational Improvements	US 278 (Covington Highway) RTOP Corridor
	Roadway and Bridges	New Roadway	East Glen Road Upgrade and Extension
	Public Transit	Transit Hub	Stonecrest Mobility Hub
	Bicycle and Pedestrian	Bicycle/Pedestrian Facility	Panola Rd Path Crossing
	Bicycle and Pedestrian	Bicycle/Pedestrian Facility	Snapfinger Woods Dr Sidewalk
	Bicycle and Pedestrian	Crosswalk	Crosswalk @ 21 Locations
	Bicycle and Pedestrian	Potential I-20 Crossing	Potential I-20 Crossing @ 3 Locations (Fairington Rd Path, Panola Rd Bridge, Evans Mill Rd)
	Bicycle and Pedestrian	Intersection Improvements	Intersection Improvements @ 5 Locations
	Bicycle and Pedestrian	Access Management Study	Panola Rd Access Management Study
Bicycle, Pedestrian, and Trail Plan	Public Transit	Bus Stop Shelter Upgrade	Covington Hwy @ Marshalls Distribution MARTA
	Public Transit	Bus Stop Bench Upgrade	Covington Hwy @ Marshalls Distribution MARTA
	Bicycle and Pedestrian	Intersection Crossing Enhancements	Intersection Crossing Enhancements @ 14 Locations
	Bicycle and Pedestrian	Pedestrian Hybrid Beacon (PHB)	Pedestrian Hybrid Beacon (PHB) @ 7 Locations
	Bicycle and Pedestrian	Panola Industrial Blvd Road Diet	Protected Bicycle Lanes
	Bicycle and Pedestrian	Rectangular Rapid-Flashing Beacon (RRFB)	Rectangular Rapid-Flashing Beacon (RRFB) @ 2 Locations



Stakeholder Input:



Are there other projects to be considered?

Which projects should be the highest priority? Why?



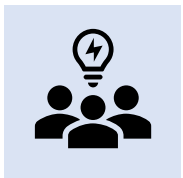
Next Steps:



Finalize the Best Practices, Inventory and Assessment, and Traffic Study Reports.



Finalize the Fiscally-Constrained Short-Term Action Plan and Fiscally-Unconstrained Long-Term Vision Project List



Continued Outreach Events (Pop-Up Events, Freight Forum, Public Meetings)





FREIGHT CLUSTER PLAN

IN COOPERATION WITH 

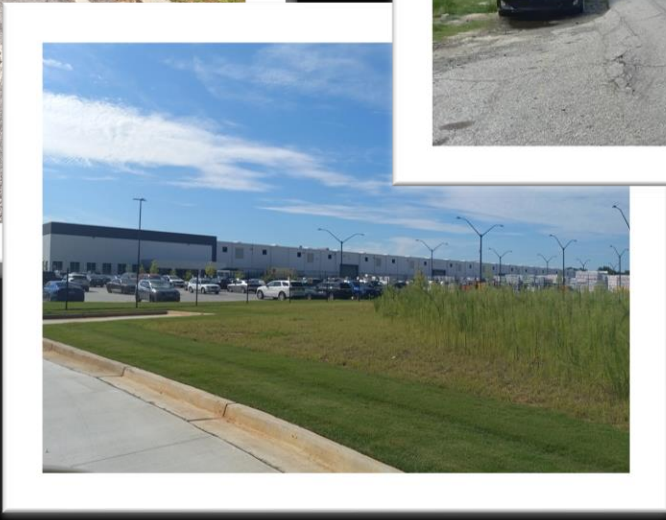
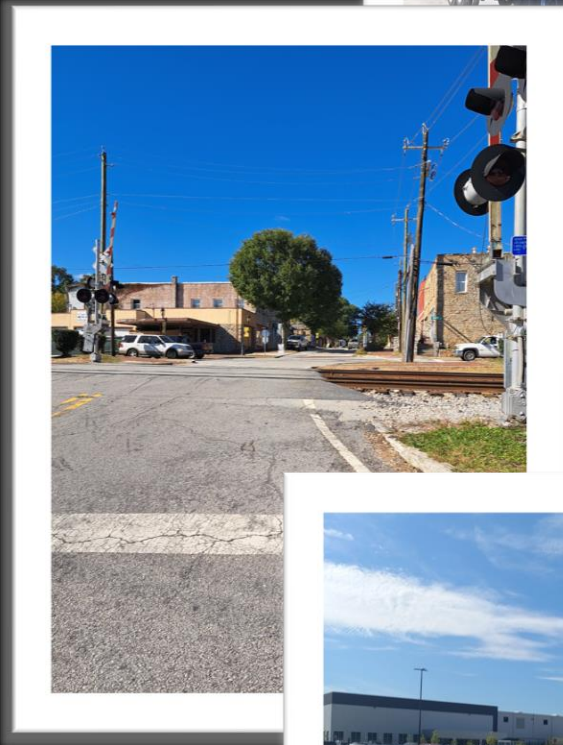
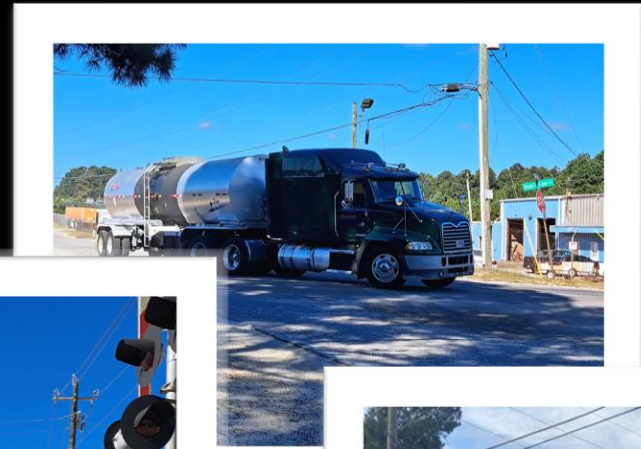
THANK YOU!

Wade Carroll

CONSULTANT PROJECT MANAGER

PHONE: (404) 566-1033

EMAIL: wcarroll@metroanalytics.com



STEERING COMMITTEE MEETING
JANUARY 24, 2024

